

**This electronic collection of documents is provided  
for the convenience of the user  
and is Not a Certified Document –**

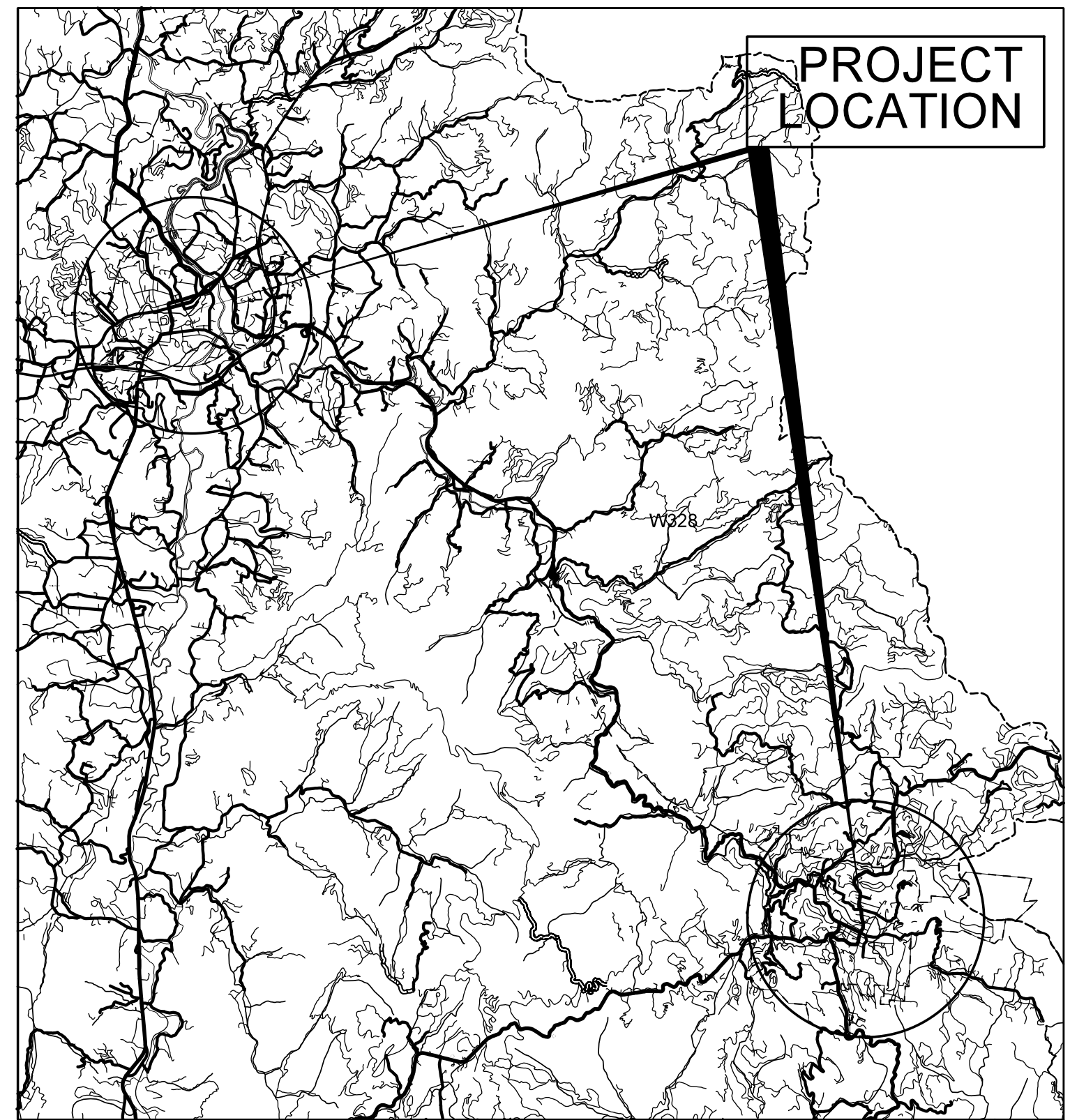
**The documents contained herein were originally issued  
and sealed by the individuals whose names and license  
numbers appear on each page, on the dates appearing  
with their signature on that page.**

**This file or an individual page  
shall not be considered a certified document.**

STATE OF NORTH CAROLINA  
DIVISION OF HIGHWAYS

STATE	STATE PROJECT REFERENCE NO.	SHEET NO.	TOTAL SHEETS
N.C.	R-5794C	1	8
STATE PROJ. NO.	F.A. PROJ. NO.	DESCRIPTION	
44910.3.4			

TIP PROJECT: R-5794C



VICINITY MAP N.T.S.

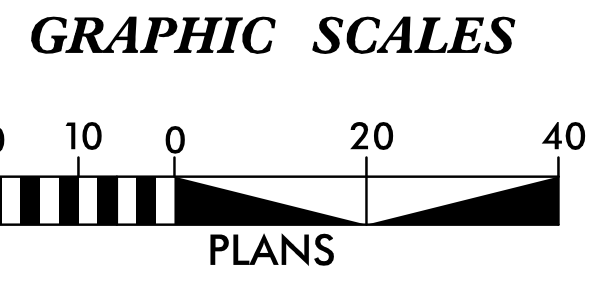
# MACON COUNTY

LOCATION: MACON COUNTY

- SITE 1 - NORTH 4TH STREET AND HICKORY STREET
- SITE 2 - NORTH 4TH STREET AND SR 1553 (FOREMAN ROAD)
- SITE 3 - NORTH 4TH STREET AND LAUREL STREET
- SITE 4 - NORTH 4TH STREET AND SPRUCE STREET
- SITE 5 - NORTH 4TH STREET AND CAROLINA WAY
- SITE 6 - NORTH 4TH STREET AND PINE STREET
- SITE 7 - SR 1659 (DEPOT STREET) AND EAST MAIN STREET
- SITE 8 - SR 1659 (DEPOT STREET) AND MACON FURNITURE
- SITE 9A - SR 1659 (DEPOT STREET) AND CREATIVE FRAMING
- SITE 9B - SR 1659 (DEPOT STREET) AND A AUTOMOTIVE
- SITE 10 - SR 1659 (DEPOT STREET) AND U.S. POST OFFICE
- SITE 11 - SR 1659 (DEPOT STREET) AND MACON APPLIANCE MART
- SITE 12 - SR 1659 (DEPOT STREET) AND DEPOT STREET PLAZA
- SITE 13 - SR 1659 (DEPOT STREET) AND FRANKLIN PRESS

TYPE OF WORK: CURB RAMPS

CONTRACT: DN00651



**DESIGN DATA**

ADT 2015 =	NA
ADT 2017 =	NA
DHV =	NA
D =	NA
T =	NA
V =	VARIES
* TTST =	NA
FUNC CLASS =	LOCAL

**PROJECT LENGTH**

N/A

Prepared in the Office of:

WSP USA Inc.  
1001 MOREHEAD SQUARE DRIVE  
SUITE 610  
CHARLOTTE, NC 28203  
NC LIC. NO. F-0165

2018 STANDARD SPECIFICATIONS

RIGHT OF WAY DATE:  
N/A

LETTING DATE:  
NOVEMBER 13, 2018

SIERRA HAYNES, PE  
PROJECT ENGINEER

PROJECT DESIGN ENGINEER

**HYDRAULICS ENGINEER**

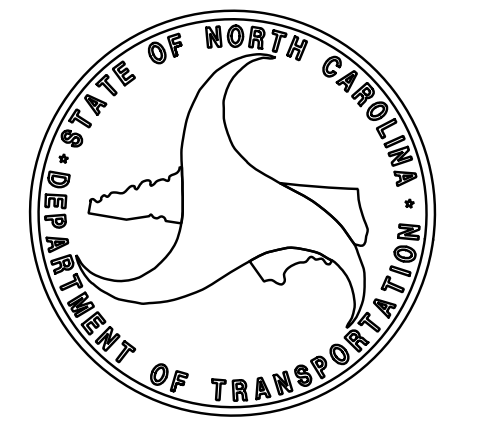
SIGNATURE: \_\_\_\_\_ P.E.


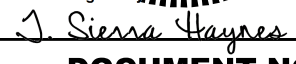
ROADWAY DESIGN ENGINEER

9/24/2018 9:34:10 AM PDT

DocuSigned by:  
Sierra Haynes

SIGNATURE: \_\_\_\_\_ P.E.

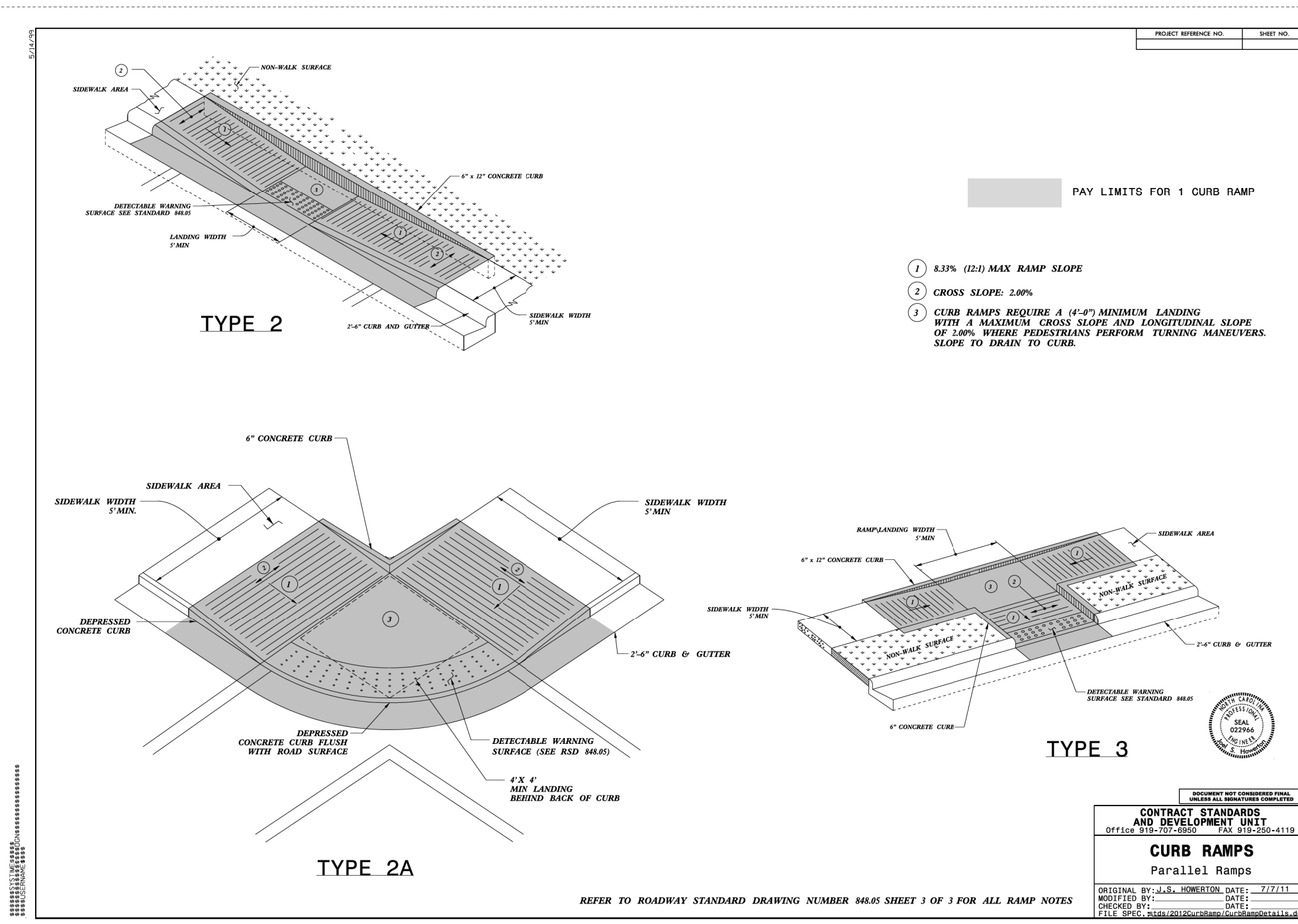
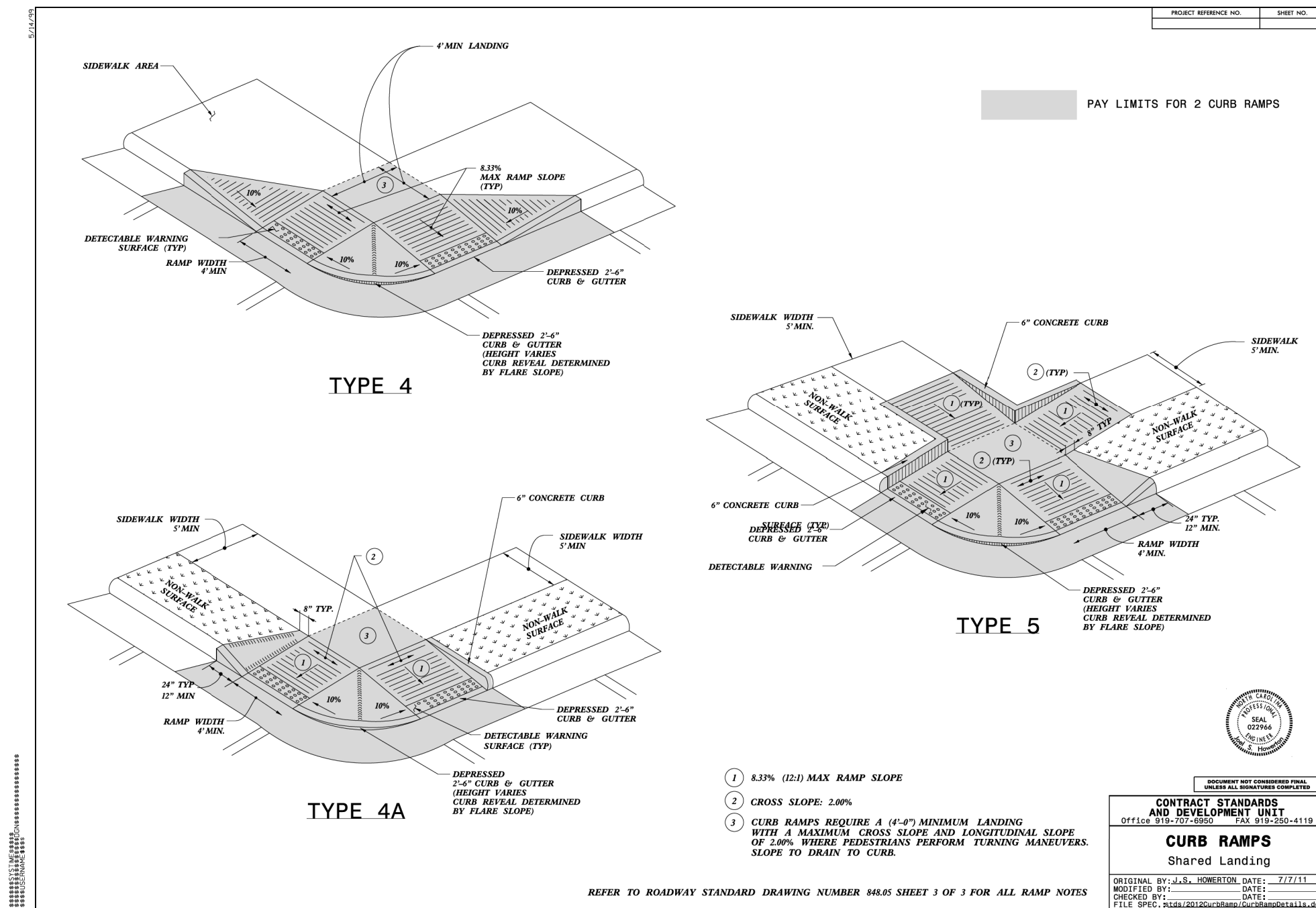
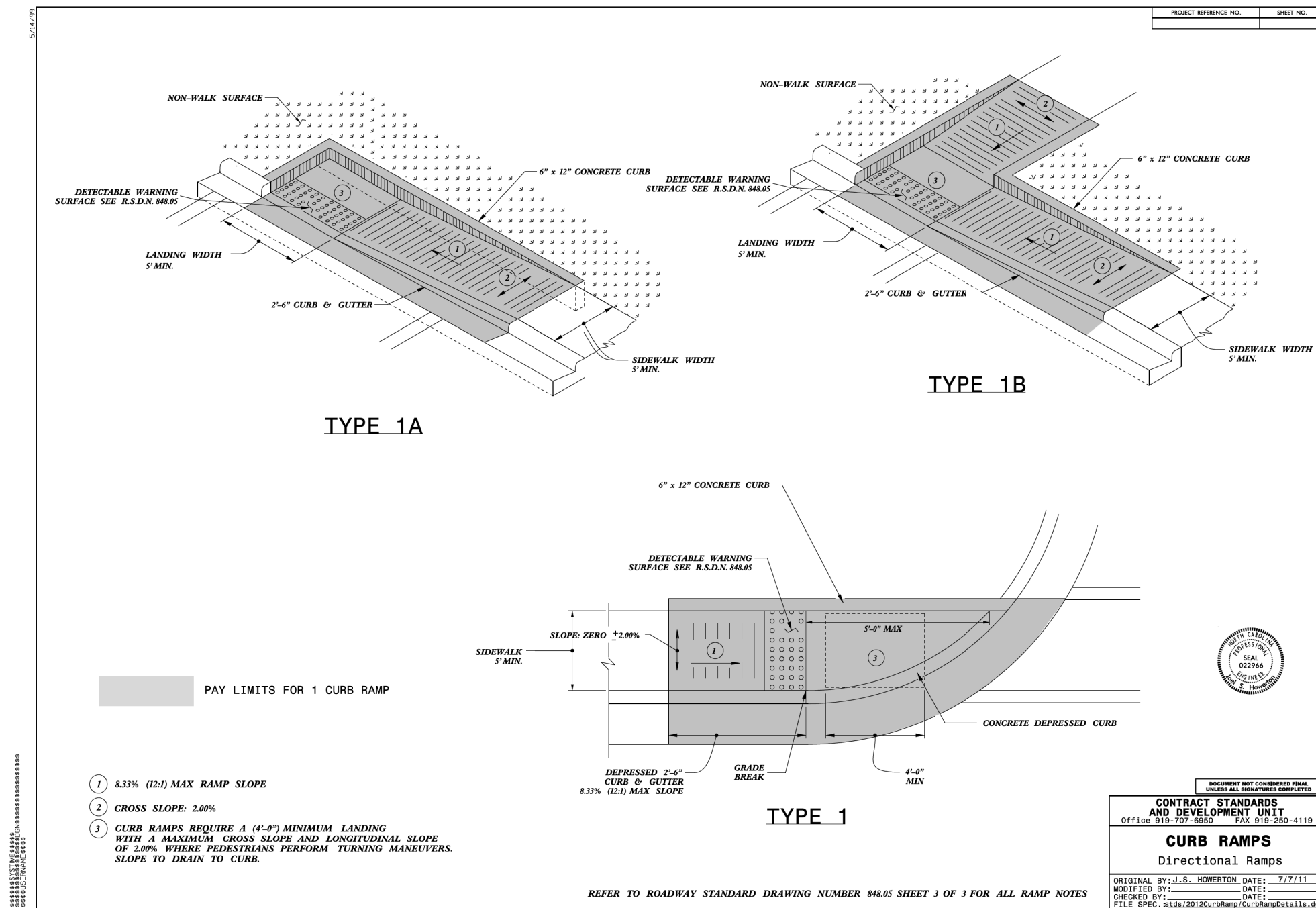


PROJECT REFERENCE NO.	SHEET NO.
R-5794C	1A
RW SHEET NO.	
ROADWAY DESIGN ENGINEER	
	
DocuSign	9/19/2018 2:04:16 PM PDT
	
<b>DOCUMENT NOT CONSIDERED FINAL UNLESS ALL SIGNATURES COMPLETED</b>	

# INDEX OF SHEETS

SHEET NUMBER	SHEET
1	TITLE SHEET
1A	INDEX OF SHEETS
2C-1 – 2C-2	RAMP DETAILS
4 – 7	PLAN SHEETS

DOCUMENT NOT CONSIDERED FINAL UNLESS ALL SIGNATURES COMPLETED



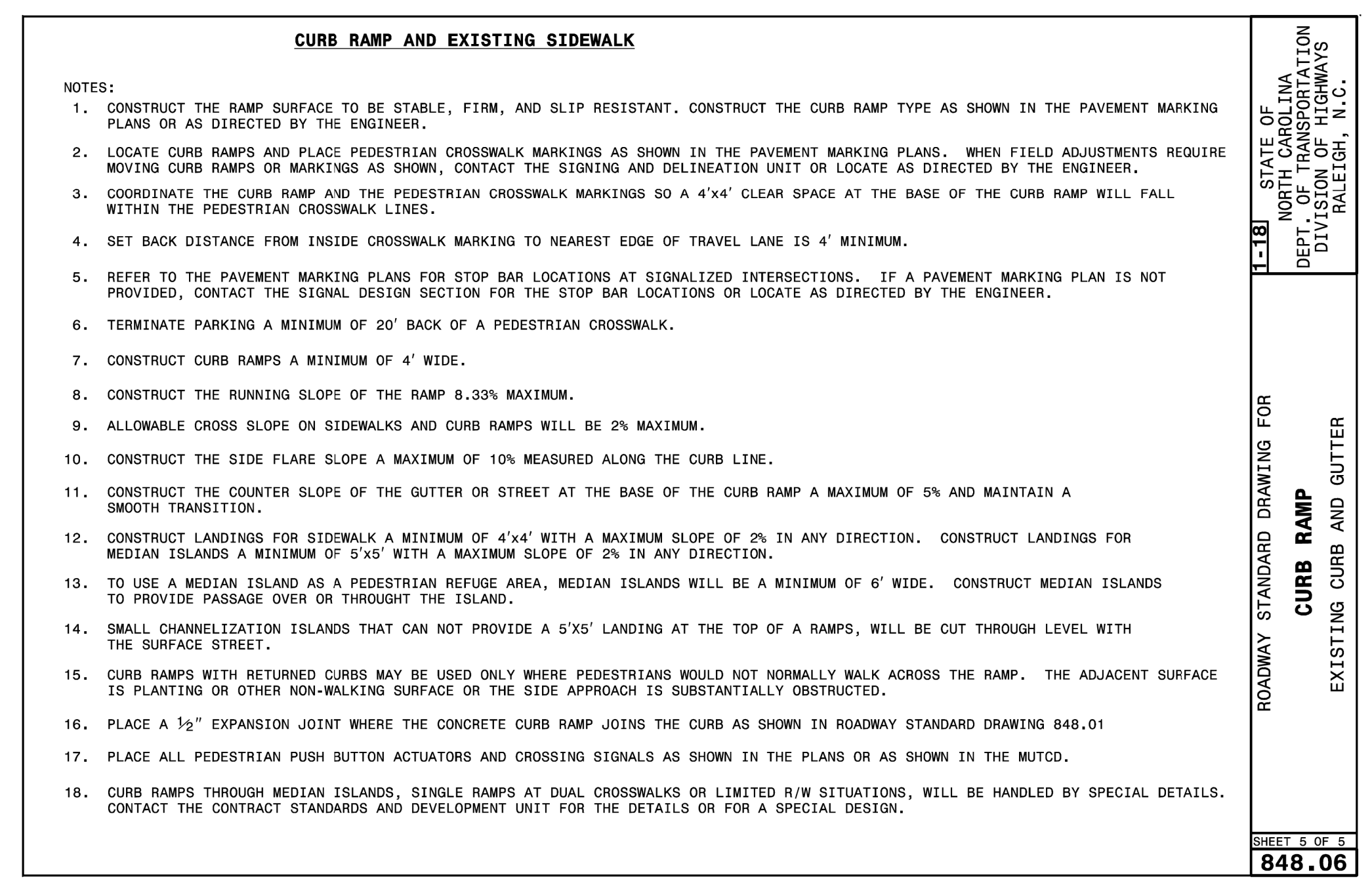
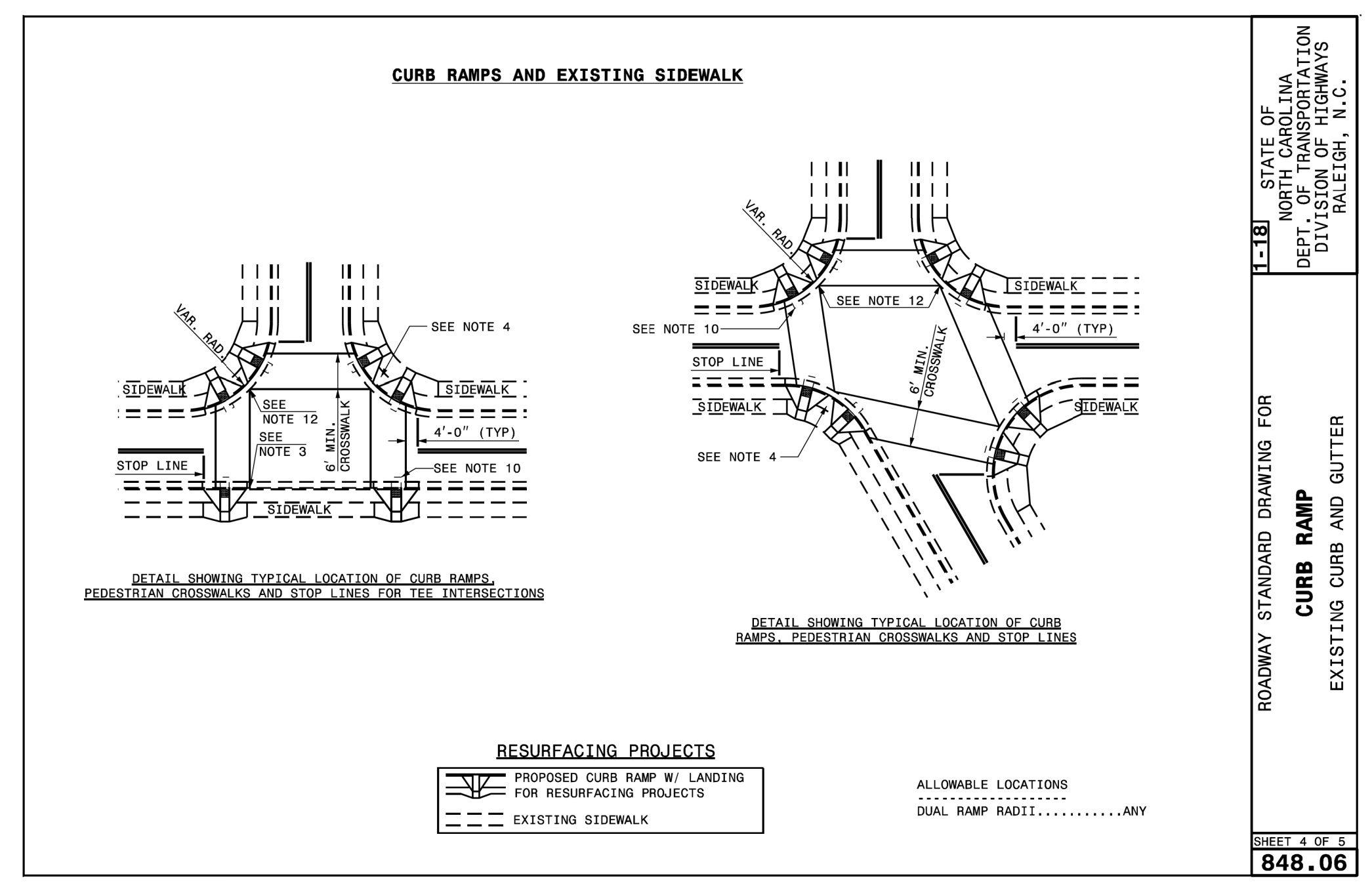
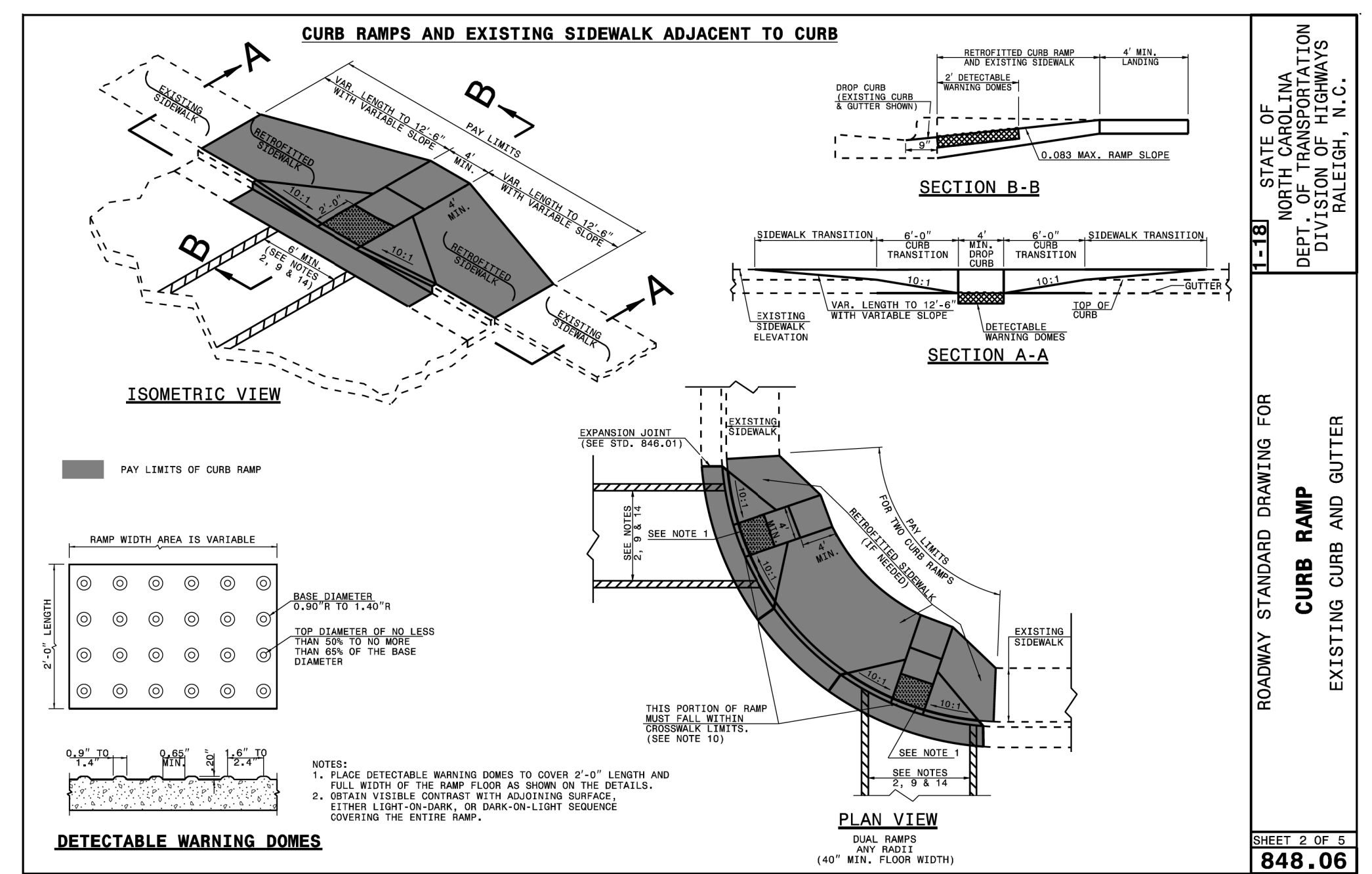
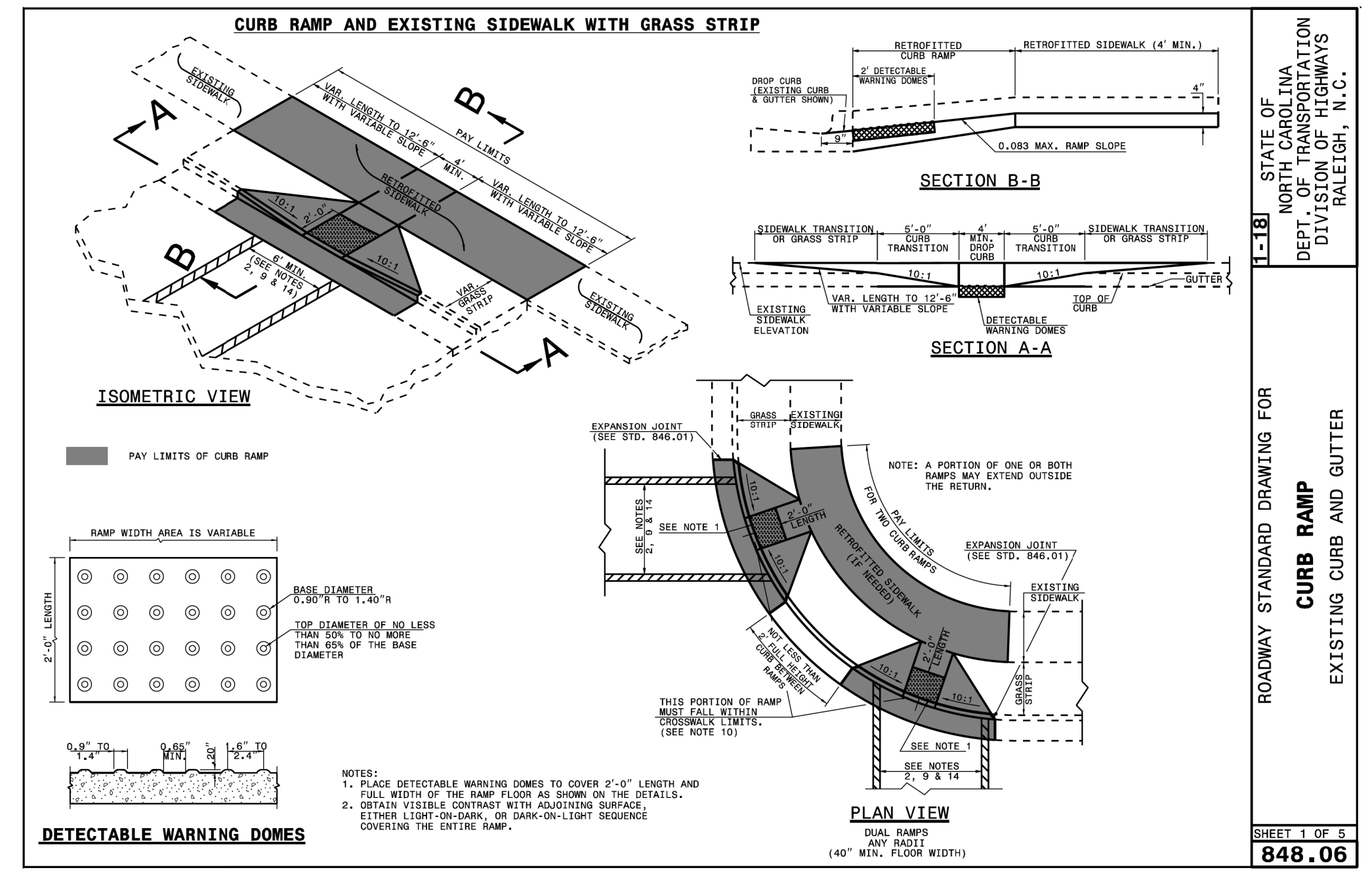
- NOTES:**
- CONSTRUCT THE RAMP SURFACE TO BE STABLE, FIRM, AND SLIP RESISTANT. CONSTRUCT THE CURB RAMP TYPE AS SHOWN IN THE PAVEMENT MARKING PLANS OR AS DIRECTED BY THE ENGINEER.
  - LOCATE CURB RAMPS AND PLACE PEDESTRIAN CROSSWALK MARKINGS AS SHOWN IN THE PAVEMENT MARKING PLANS. WHEN FIELD ADJUSTMENTS REQUIRE MOVING CURB RAMPS OR MARKINGS AS SHOWN, CONTACT THE SIGNING AND DELINEATION UNIT OR LOCATE AS DIRECTED BY THE ENGINEER.
  - COORDINATE THE CURB RAMP AND THE PEDESTRIAN CROSSWALK MARKINGS SO A 4'x4' CLEAR SPACE AT THE BASE OF THE CURB RAMP WILL FALL WITHIN THE PEDESTRIAN CROSSWALK LINES.
  - SET BACK DISTANCE FROM INSIDE CROSSWALK MARKING TO NEAREST EDGE OF TRAVEL LANE IS 4' MINIMUM.
  - REFER TO THE PAVEMENT MARKING PLANS FOR STOP BAR LOCATIONS AT SIGNALIZED INTERSECTIONS. IF A PAVEMENT MARKING PLAN IS NOT PROVIDED, CONTACT THE SIGNAL DESIGN SECTION FOR THE STOP BAR LOCATIONS OR LOCATE AS DIRECTED BY THE ENGINEER.
  - TERMINATE PARKING A MINIMUM OF 20' BACK OF A PEDESTRIAN CROSSWALK.
  - CONSTRUCT CURB RAMPS A MINIMUM OF 4' WIDE.
  - CONSTRUCT THE RUNNING SLOPE OF THE RAMP 8.33% MAXIMUM.
  - ALLOWABLE CROSS SLOPE ON SIDEWALKS AND CURB RAMPS WILL BE 2% MAXIMUM.
  - CONSTRUCT THE SIDE FLARE SLOPE A MAXIMUM OF 10% MEASURED ALONG THE CURB LINE.
  - CONSTRUCT THE COUNTER SLOPE OF THE GUTTER OR STREET AT THE BASE OF THE CURB RAMP A MAXIMUM OF 5% AND MAINTAIN A SMOOTH TRANSITION.
  - CONSTRUCT LANDINGS FOR SIDEWALK A MINIMUM OF 4'x4' WITH A MAXIMUM SLOPE OF 2% IN ANY DIRECTION. CONSTRUCT LANDINGS FOR MEDIAN ISLANDS A MINIMUM OF 5'x5' WITH A MAXIMUM SLOPE OF 2% IN ANY DIRECTION.
  - TO USE A MEDIAN ISLAND AS A PEDESTRIAN REFUGE AREA, MEDIAN ISLANDS WILL BE A MINIMUM OF 6' WIDE. CONSTRUCT MEDIAN ISLANDS TO PROVIDE PASSAGE OVER OR THROUGH THE ISLAND.
  - SMALL CHANNELIZATION ISLANDS THAT CAN NOT PROVIDE A 5'x5' LANDING AT THE TOP OF A RAMPS, WILL BE CUT THROUGH LEVEL WITH THE SURFACE STREET.
  - CURB RAMPS WITH RETURNED CURBS MAY BE USED ONLY WHERE PEDESTRIANS WOULD NOT NORMALLY WALK ACROSS THE RAMP. THE ADJACENT SURFACE IS PLANTING OR OTHER NON-WALKING SURFACE OR THE SIDE APPROACH IS SUBSTANTIALLY OBSTRUCTED.
  - PLACE A 1/2" EXPANSION JOINT WHERE THE CONCRETE CURB RAMP JOINS THE CURB AS SHOWN IN ROADWAY STANDARD DRAWING 848.01
  - PLACE ALL PEDESTRIAN PUSH BUTTON ACTUATORS AND CROSSING SIGNALS AS SHOWN IN THE PLANS OR AS SHOWN IN THE MUTCD.
  - CURB RAMPS THROUGH MEDIAN ISLANDS, SINGLE RAMPS AT DUAL CROSSWALKS OR LIMITED R/W SITUATIONS, WILL BE HANDLED BY SPECIAL DETAILS. CONTACT THE CONTRACT STANDARDS AND DEVELOPMENT UNIT FOR THE DETAILS OR FOR A SPECIAL DESIGN.

1-18) STATE OF NORTH CAROLINA DEPT. OF TRANSPORTATION DIVISION OF HIGHWAYS RALEIGH, N. C.

ROADWAY STANDARD DRAWING FOR CURB RAMPS NOTES

SHEET 3 OF 3  
**848.05**

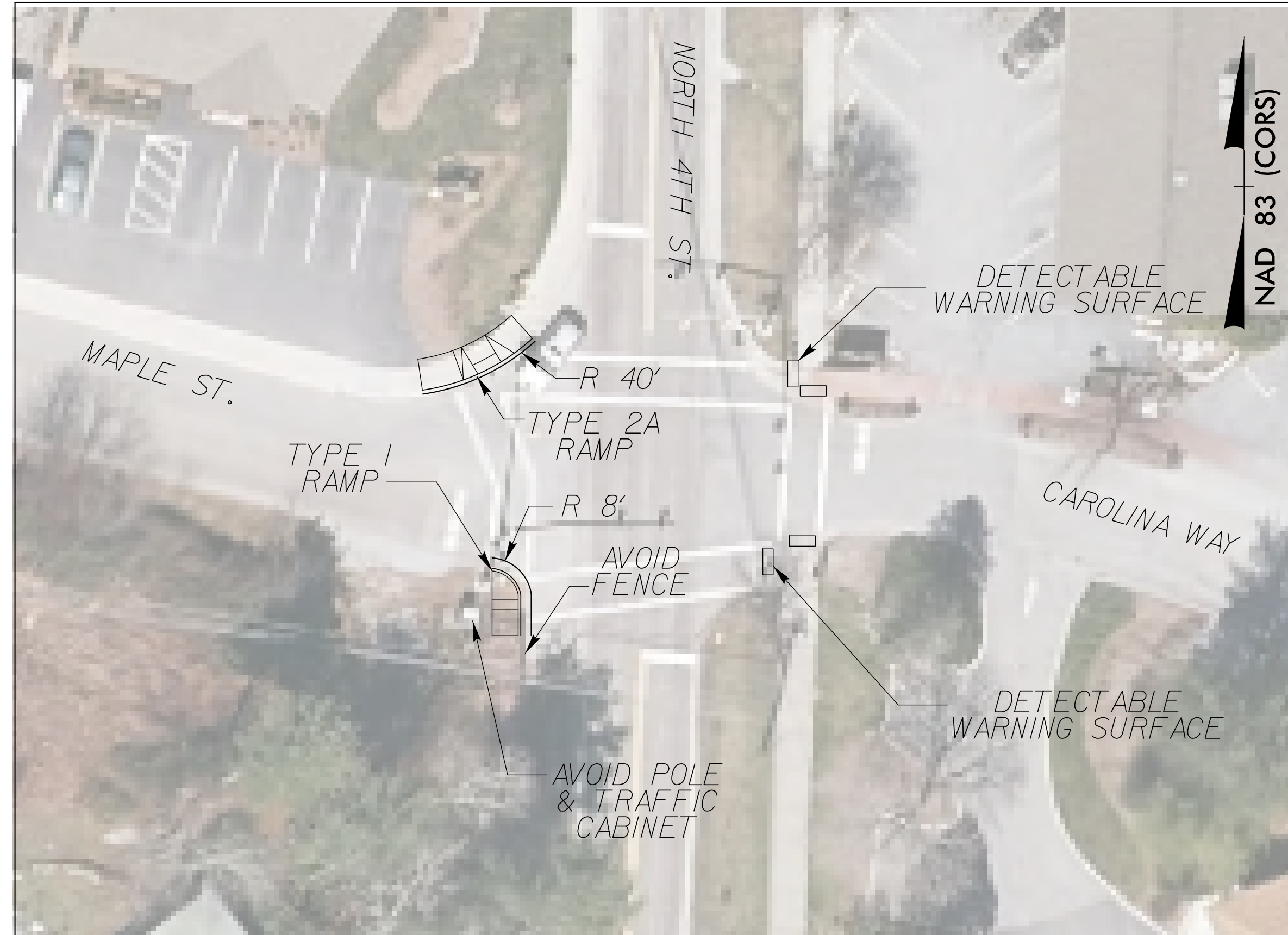
8/17/99  
8/19/2018  
C:\Projects\1188360-03\_NCDOT\_D14\_ADA\_Curb\_Ramps\UGN\AR5794\_SectionC\_SHT\_2C1-2C2.dgn  
COMSUN



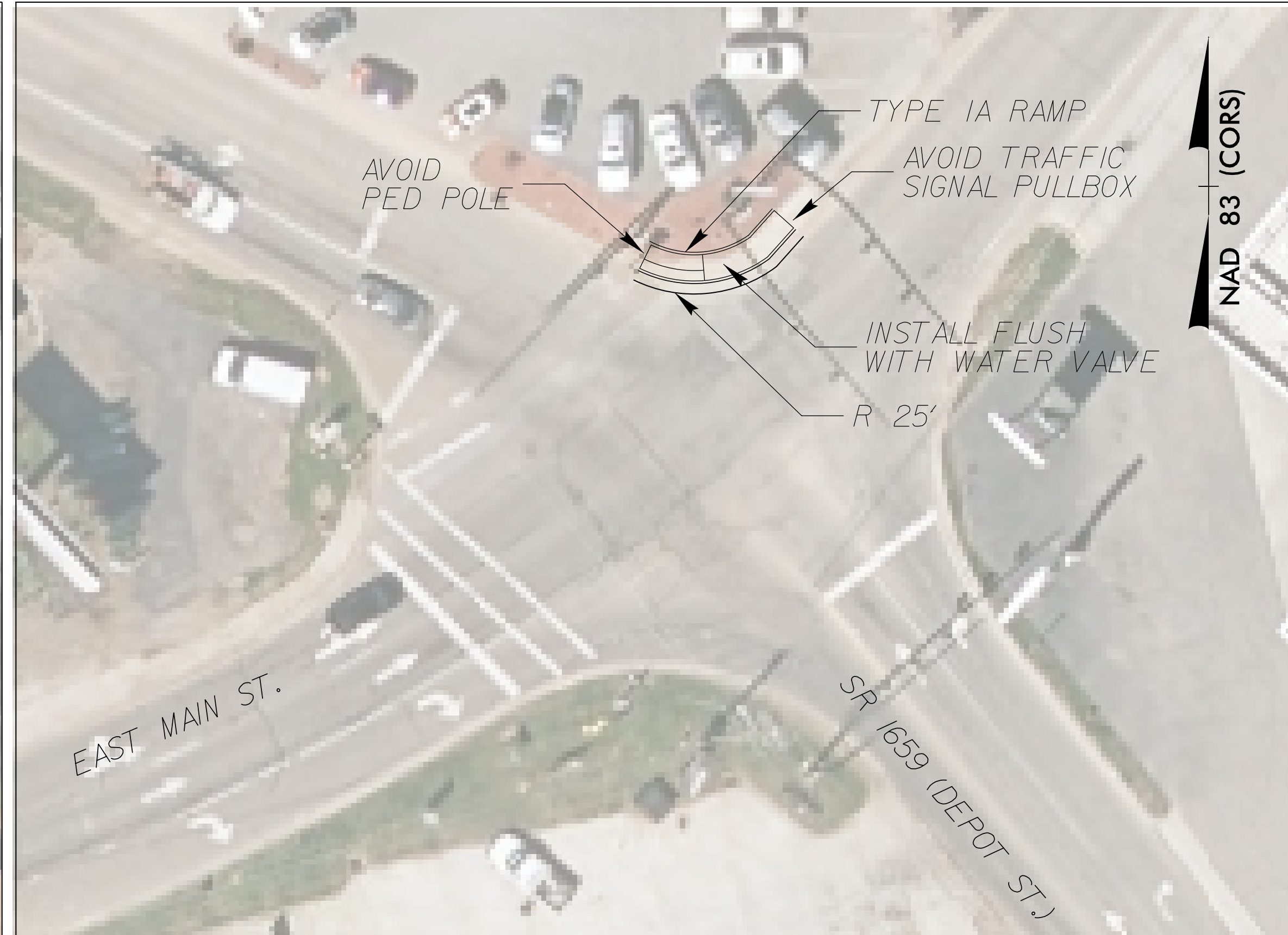


# SITE PLAN SHEETS

SITE 5 - NORTH 4TH STREET AND CAROLINA WAY



SITE 7 - SR 1659 (DEPOT STREET) AND E MAIN STREET



SITE 6 - NORTH 4TH STREET AND PINE STREET



SITE 8 - SR 1659 (DEPOT STREET) AND MACON FURNITURE



PROJECT REFERENCE NO. R-5794C	SHEET NO. 5
RW SHEET NO.	
ROADWAY DESIGN ENGINEER	HYDRAULICS ENGINEER
9/19/2018 2:04:16 PM PDT	
<b>DOCUMENT NOT CONSIDERED FINAL UNLESS ALL SIGNATURES COMPLETED</b>	
<b>GRAPHIC SCALE</b> 20 10 0 20 40 PLANS	

SEE SHEETS 2C-1 & 2C-2 FOR CURB RAMP DETAILS

5/14/99

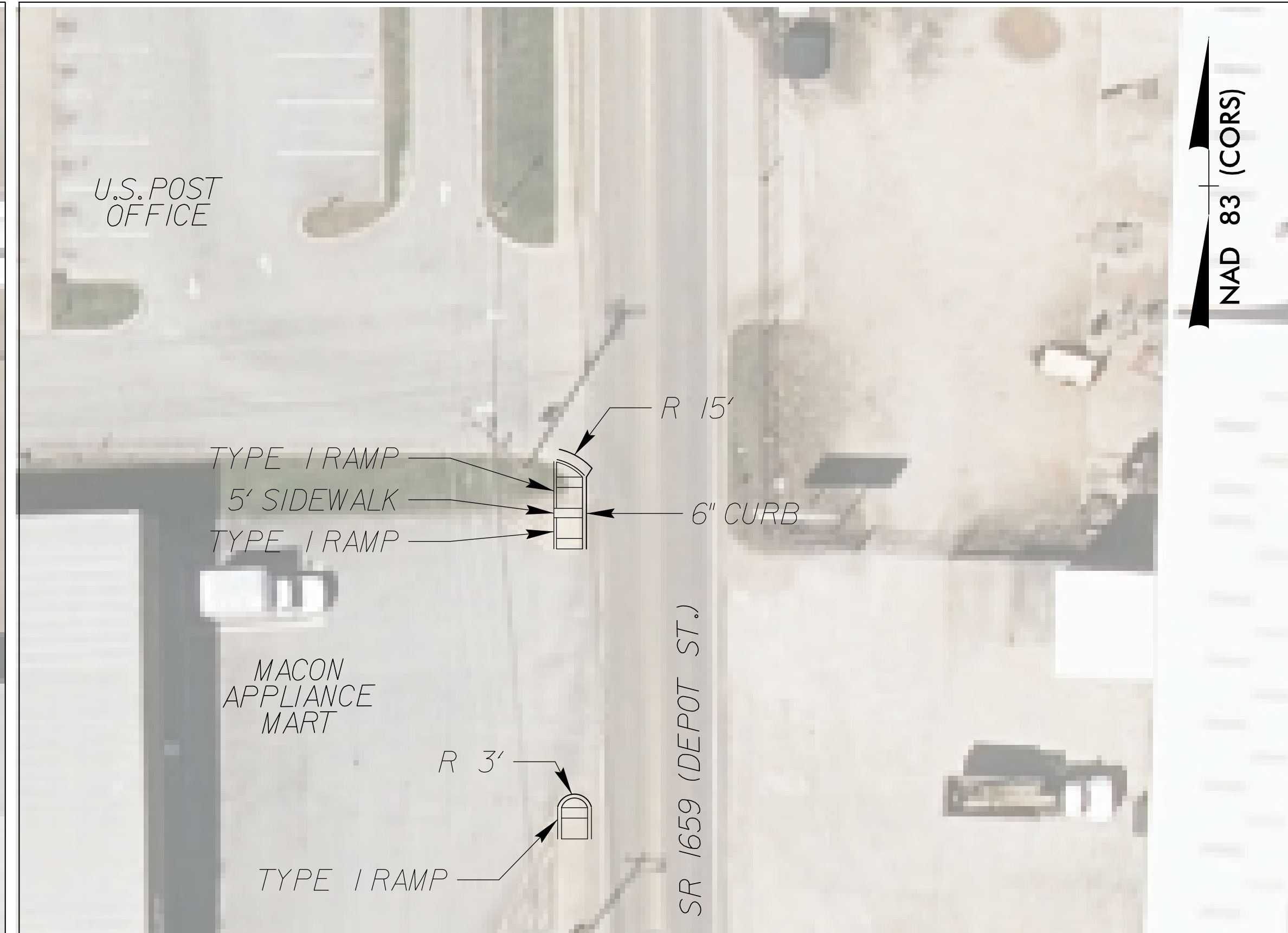
9/18/2018 11:18:36-03 1188360-03 D:\1 ADA Curbs Ramps\JGNN\R5794C\_RDY\_PSH05.dgn

# SITE PLAN SHEETS

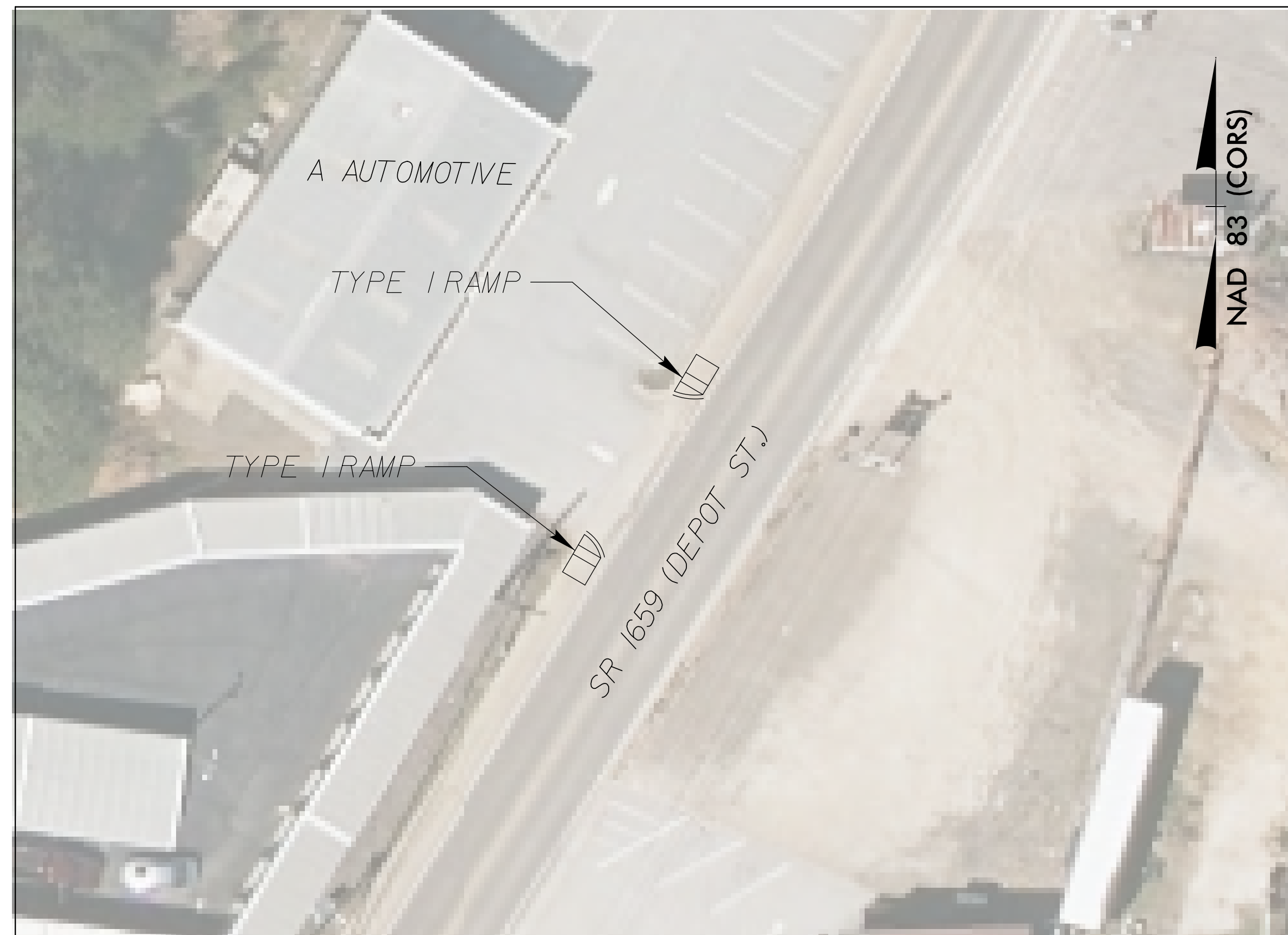
SITE 9A - SR 1659 (DEPOT STREET) AND STONE LEDGE PLAZA



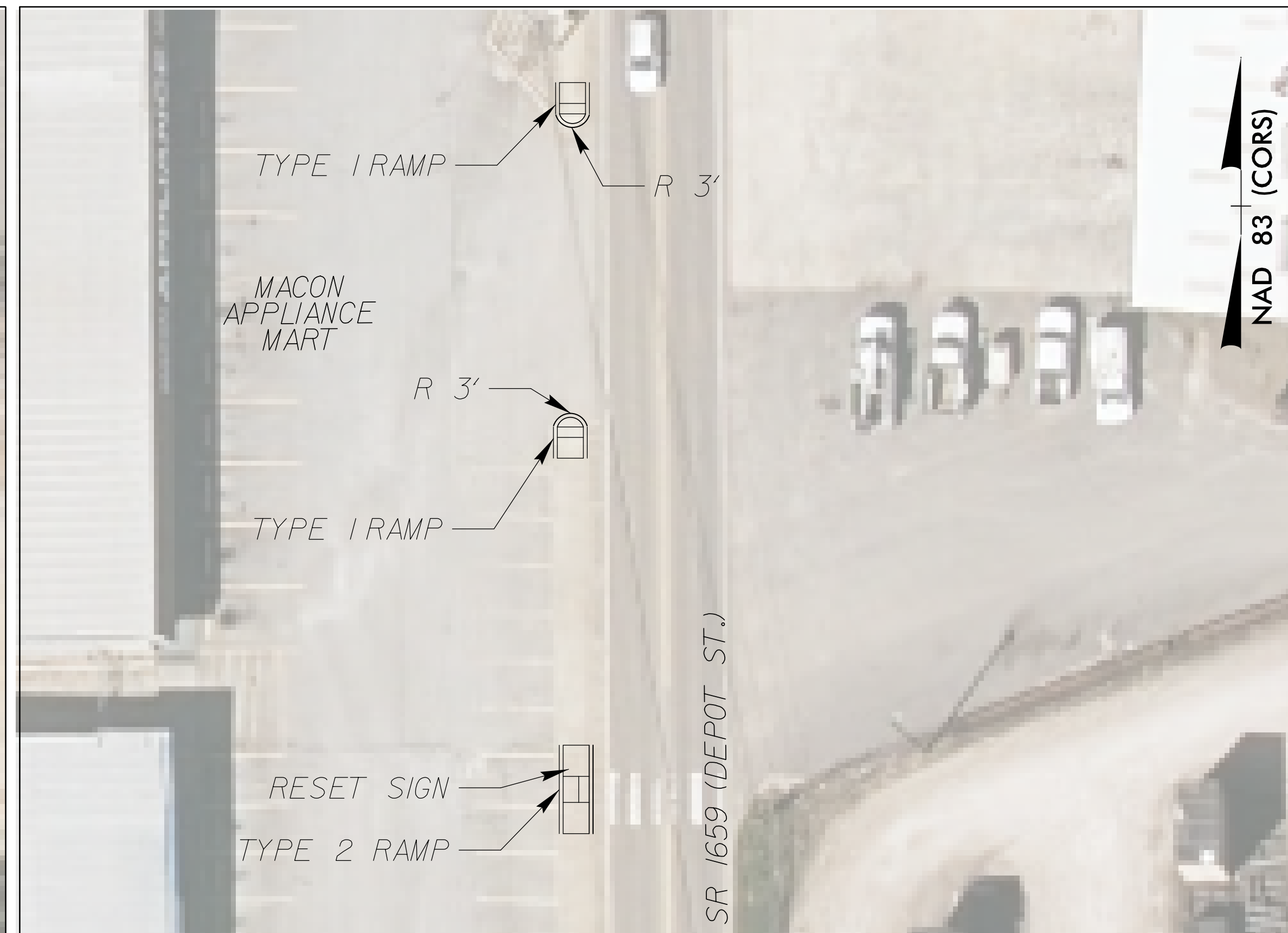
SITE 10 - SR 1659 (DEPOT STREET) AND POST OFFICE



SITE 9B - SR 1659 (DEPOT STREET) AND A AUTOMOTIVE



SITE 11 - SR 1659 (DEPOT STREET) AND MACON APPLIANCE MART



PROJECT REFERENCE NO. R-5794C	SHEET NO. 6
RW SHEET NO.	
ROADWAY DESIGN ENGINEER	HYDRAULICS ENGINEER
9/19/2018 2:04:16 PM PDT	
DOCUMENT NOT CONSIDERED FINAL UNLESS ALL SIGNATURES COMPLETED	
GRAPHIC SCALE 20 10 0 20 40 PLANS	

SEE SHEETS 2C-1 & 2C-2 FOR CURB RAMP DETAILS

5/14/99

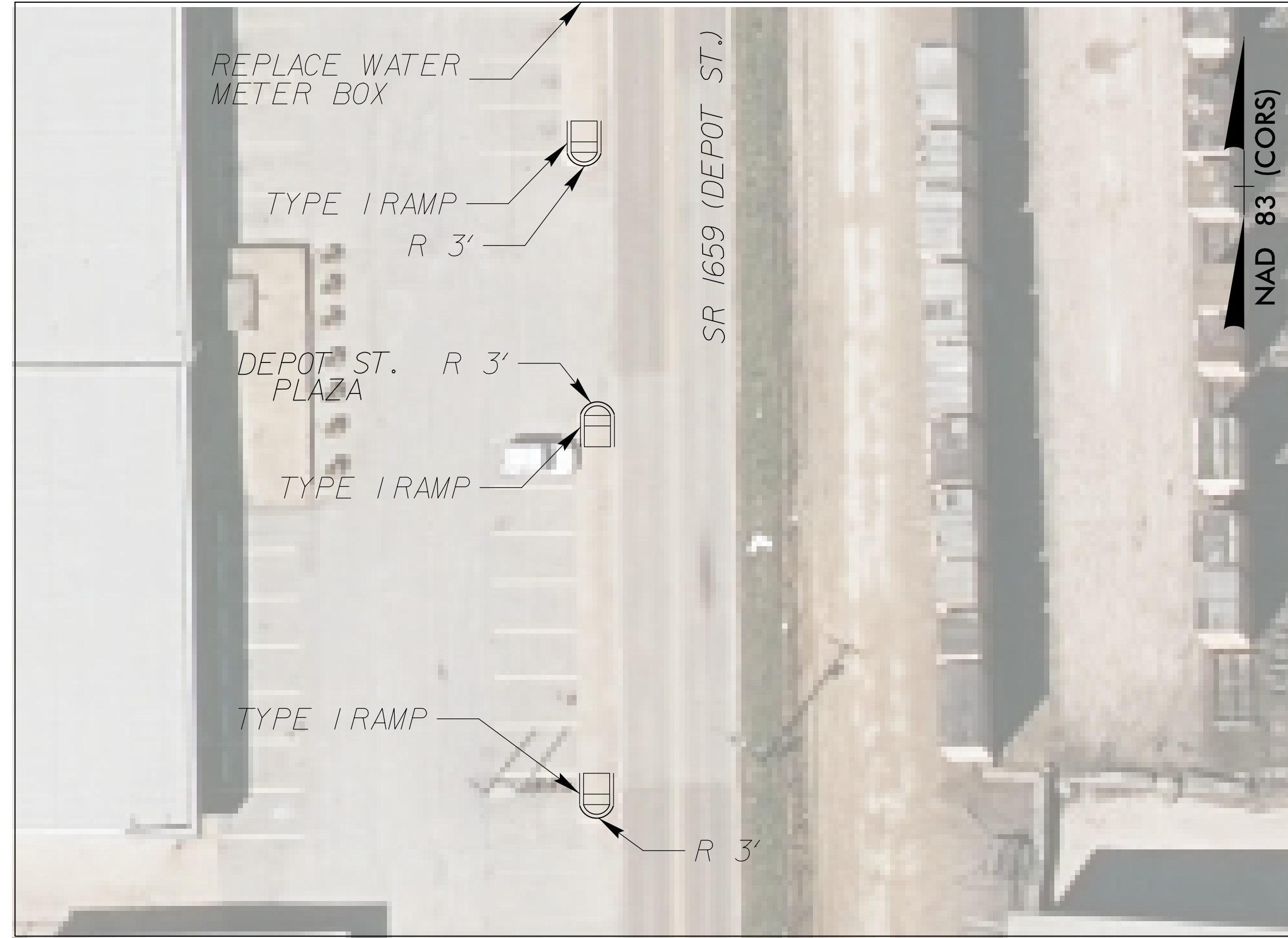
9/18/2018 11:18:36-03:15:00 D:\1 ADA Curb Ramps\06\18\5794C\RDY\_PSH06.dgn



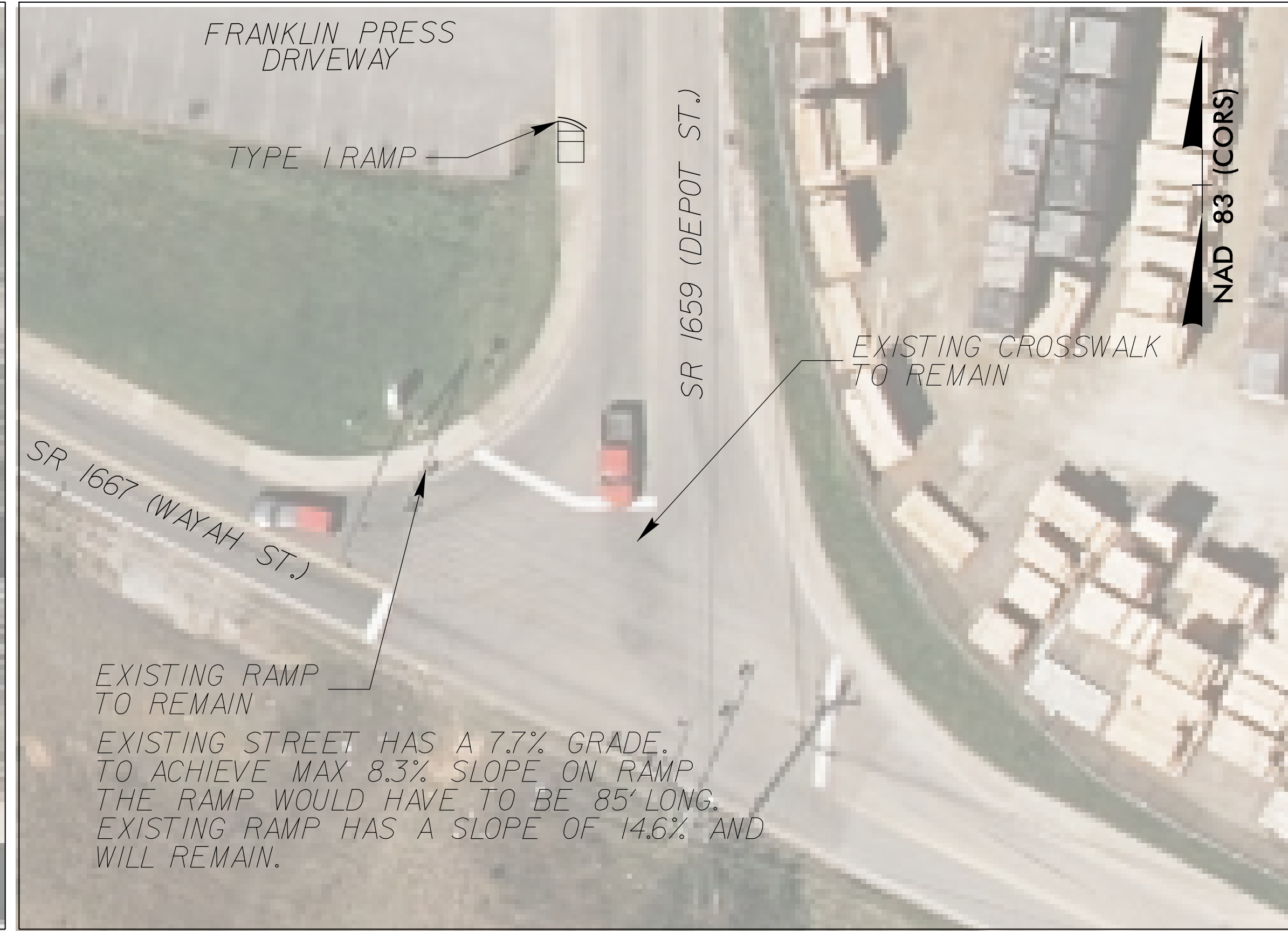
# SITE PLAN SHEETS

PROJECT REFERENCE NO. R-5794C	SHEET NO. 7
RW SHEET NO.	
ROADWAY DESIGN ENGINEER	HYDRAULICS ENGINEER
9/19/2018 2:04:16 PM PDT	
<b>DOCUMENT NOT CONSIDERED FINAL UNLESS ALL SIGNATURES COMPLETED</b>	
<b>GRAPHIC SCALE</b> 20 10 0 20 40 PLANS	

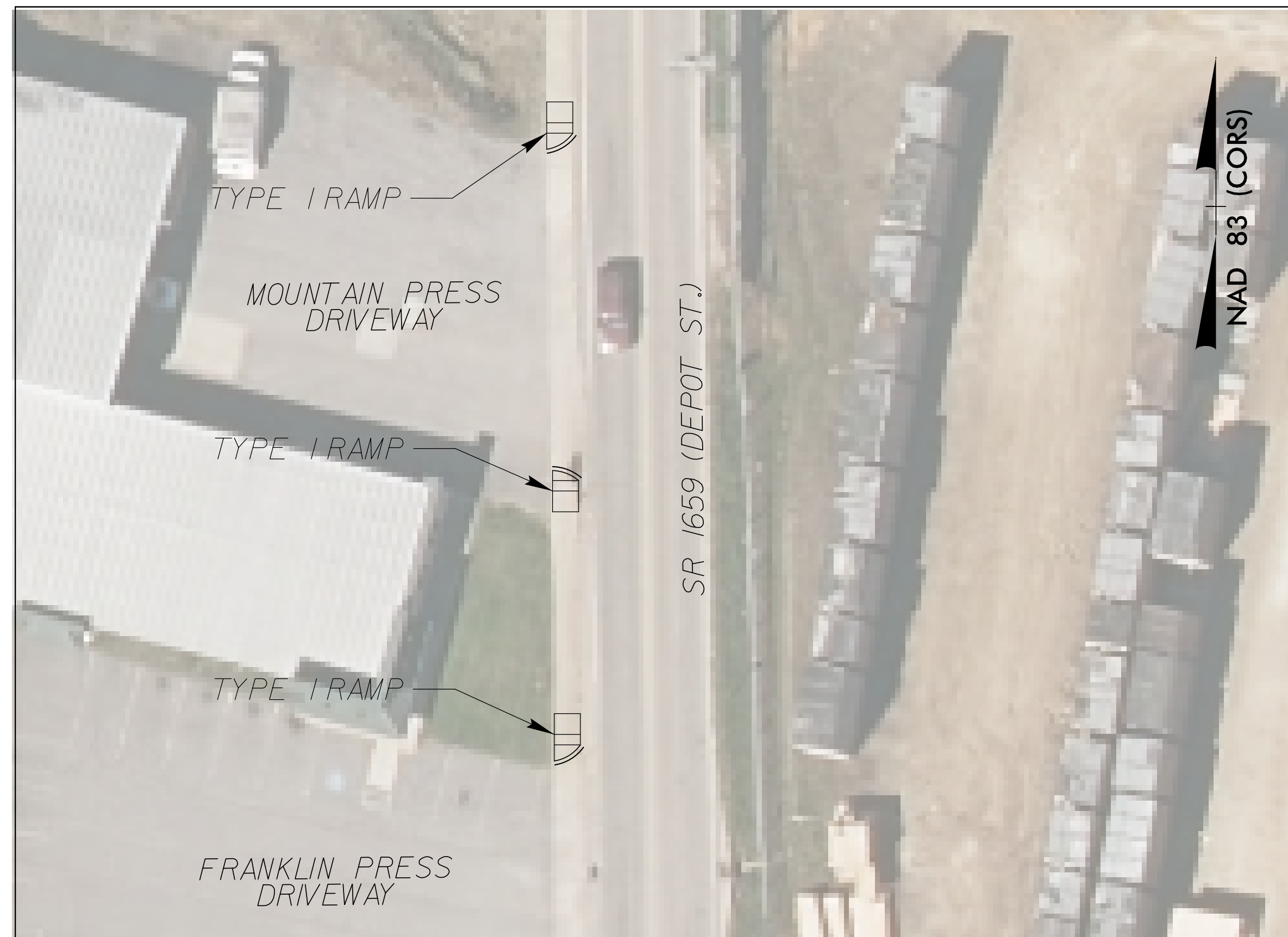
SITE 12 - SR 1659 (DEPOT STREET) AND DEPOT ST. PLAZA



SITE 14 - SR 1659 (DEPOT STREET) AND SR 1667 (WAYAH STREET)



SITE 13 - SR 1659 (DEPOT STREET) AND COOK STREET



SEE SHEETS 2C-1 & 2C-2 FOR CURB RAMP DETAILS

5/14/99

9/18/2018 11:18:36-03:03:0000014 ADA\_Curb\_Ramps\JGNN\R5794C\_RDY\_PSH07.dgn